

# GOLDENFIELD

# We sold 500,000 Platinum PSUs

in China market



Vien Xiao  
Sales Manager

+86 137 5132 6709  
salesq@goldenfield.com.cn

JUNE2-5, 2026

**L1111A** BOOTH  
NO.

4F,Hall 1,Taipei Nangang Exhibition Center

Dongguan Goldenfield Industrial Co., Ltd.



REGARDING  
OUR PRODUCTS



# About Golden Field

Golden Field was founded in 1993. As an industry benchmark awarded the title of "China Outstanding Private Technology Enterprise", its core products include computer cases, switching power supplies, etc., ranking among the top professional manufacturers of computer peripherals in China. The company continues to increase investment in R&D and innovation, gathers more than 100 full-time R&D talents, and has built two scientific research platforms: a provincial-level engineering technology R&D center and a provincial-level enterprise technology center. It has led the formulation and revision of a number of national standards and owns hundreds of national patents.

Possess

**100+**

R&D Staff

Experience

**30**

Remaining Years

Land Area

**70000+**

Square Meters



- Golden Field Power Supply Self-Developed & Self-Manufactured Production Park.

Every Golden Field power supply is precisely assembled through the collaboration of automation and manual work. Before leaving the factory, each unit undergoes comprehensive simulated testing to ensure stable operation in real-world scenarios.

**With 33 years of development, we have always been committed to independent R&D and production of power supply products.**

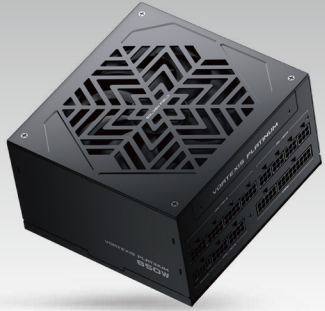
In 2024, our partnership with JD.com pioneered a new era of platinum efficiency in China's PC power supply industry.

## Participated in the formulation of Chinese national standards.

- GB/T 9813.1-2016  
Standard Level: National Standard  
Drafting Organizations:  
Lenovo (Beijing) Co., Ltd.,  
China Electronics Standardization Institute,  
Founder Technology Group Co., Ltd.,  
Tsinghua Tongfang Co., Ltd.,  
Great Wall Computer Shenzhen Co., Ltd.,  
HEDY Holdings Co., Ltd.,  
Dongguan Golden Field Industrial Co., Ltd.
- GB/T 9813.2-2016  
Standard Level: National Standard  
Drafting Organizations:  
Lenovo (Beijing) Co., Ltd.,  
China Electronics Standardization Institute,  
HEDY Holdings Co., Ltd.,  
Founder Technology Group Co., Ltd.,  
Tsinghua Tongfang Co., Ltd.,  
China Great Wall Computer Shenzhen Co., Ltd.,  
Dongguan Golden Field Industrial Co., Ltd.
- GB/T 26246-2010  
Standard Level: National Standard  
Drafting Organizations:  
Dongguan Golden Field Industrial Co., Ltd.,  
Electronic Industry Standardization Research Institute of the Ministry of Industry and Information Technology,  
HEDY Holdings Co., Ltd.,  
Dongguan Orient Technology Co., Ltd.,  
Shenzhen Huntkey Power Supply Technology Co., Ltd.

**Recognized as a National High-Tech Enterprise by the China High-Tech Enterprise Administration Office.**

WH/BK



Vortexis Platinum



Vortexis Platinum

WH/BK



Designer 14 ATX

WH/BK



Designer 14 M-ATX



Vortexis Platinum SFX



Nexus Gold Ultra

WH/BK



Wind Chaser ATX

WH/BK



Parallel World ATX

# Vortexis Platinum



- 80 PLUS Platinum Certification + China CQC Class IV Energy Efficiency Dual Certification.

80 PLUS白金认证+中国CQC IV级能效双认证

- Native PCIe 5.1 12V-2x6 GPU power connector.

原生 PCIe 5.1 12V-2x6 显卡供电接口

- Compliant with ATX 3.1 standard, supporting 300% instantaneous dynamic load.

兼容 ATX3.1 标准, 支持300% 瞬时动态负载

- Standardly equipped with flexible textured modular cables for easier cable management and I-STOP intelligent fan start-stop technology.

标配更易理线的柔软模组压纹线、风扇I-STOP智能启停

- Top-tier Japanese primary & secondary capacitors, featuring LLC resonant circuit, active PFC and DC-DC architecture.

日本一线主/副电容+LLC+主动PFC+DC-DC架构

- Certified by multiple global safety and environmental standards including CE, FCC and RoHS.

通过 CE、FCC、RoHS 等全球多项安全环保认证

- Comprehensive full-range safety protections: OVP, UVP, OPP, OTP, SCP, NLP and SIP.

OVP、UVP、OPP、OTP、SCP、NLP、SIP全维度安全防护



Black/White

750W/850W/1050W/1250W

# Vortexis Platinum



- High-power power supply for AI server platform construction.  
高功率电源, 适配AI服务器搭建
- Dual CPU and quad GPU parallel output, with 8 hard drive interfaces.  
双CPU+四显卡并行输出、配备8个硬盘接口
- 80 PLUS Platinum Certification + China CQC Class IV Energy Efficiency Dual Certification.  
80 PLUS白金认证+中国CQC IV级能效双认证
- Multiple native PCIe 5.1 12V-2x6 GPU power connectors.  
多路原生 PCIe 5.1 12V-2x6显卡供电接口
- Compliant with ATX 3.1 standard, supporting 300% instantaneous dynamic load.  
兼容 ATX3.1标准, 支持300%瞬时动态负载
- Top-tier Japanese primary & secondary capacitors + full-bridge LLC + DC-DC topology.  
日本一线主/副电容+全桥LLC+DC-DC架构
- Equipped with soft modular textured cables for convenient cable management and intelligent fan start-stop function.  
标配更易理线的柔软模组压纹线、风扇智能启停
- Passed global safety and environmental certifications including CE, FCC and RoHS.  
通过CE、FCC、RoHS等全球多项安全环保认证
- Full-dimensional safety protections: OVP, SCP, NLO, OCP, UVP, SIP, OPP, OTP.  
OVP、SCP、NLO、OCP、UVP、SIP、OPP、OTP全维度安全防护



1500W/1850W/2000W/3000W

# Vortexis Platinum SFX



550W/650W/750W/850W

- SFX form factor, ideal for compact DIY builds.  
SFX 尺寸规格, 适配小型化DIY方案
- 80 PLUS Platinum Certification + China CQC Class IV Energy Efficiency Dual Certification.  
80 PLUS白金认证+中国CQC IV 级能效双认证
- Native PCIe 5.1 12V-2x6 GPU power connector.  
原生 PCIe 5.1 12V-2x6 显卡供电接口
- Compliant with ATX 3.1 standard, supporting 300% instantaneous dynamic load.  
兼容 ATX3.1 标准, 支持300% 瞬时动态负载
- Genuine Japanese primary & secondary capacitors + APFC + LLC + SR + DC-DC topology.  
日本一线主/副电容+APFC+LLC +SR+DC-DC架构
- 9-blade hydraulic bearing fan with intelligent temperature control and responsive thermal control.  
配备9叶液压轴承风扇
- Soft modular textured cables for easy cable management, constructed from pure tinned copper.  
标配更易理线的柔软模组压纹线, 纯铜镀锡材质
- Comprehensive safety protections: OVP, UVP, OPP, OTP, SCP, SIP.  
OVP、UVP、OPP、OTP、SCP、SIP多重安全保护电路
- Certified with CE, FCC, RoHS and other global safety & environmental standards.  
通过 CE、FCC、RoHS 等全球多项安全环保认证

# Nexus Gold



- 80 PLUS Gold Certification + China CQC Class III Energy Efficiency Dual Certification.

80 PLUS金牌认证+中国CQC III级能效双认证

- Native PCIe 5.1 12V-2x6 GPU power connector.

原生 PCIe 5.1 12V-2x6 显卡供电接口

- Compliant with ATX 3.1 standard, supporting 300% instantaneous dynamic load.

兼容 ATX3.1 标准, 支持300% 瞬时动态负载

- Japanese main capacitors + DC-DC + APFC + LLC platinum-level topology.

日本主电容+DC-DC+APFC+LLC 白金同级架构

- Equipped with Golden Field self-developed Xuanji Chip and NexusCool 3D+ high-efficiency heat dissipation technology.

搭载金河田自研璇玑芯片、NexusCool 3D+高效散热技术

- Comes with soft modular textured cables for better cable management, and one-key fan start/stop intelligent ECO mode.

标配更易理线的柔软模组压纹线、风扇一键启停智能ECO

- Passed global safety and environmental certifications including CE, FCC and RoHS.

通过 CE、FCC、RoHS 等全球多项安全环保认证

- Full-dimensional safety protections: OVP, UVP, OPP, OTP, SCP, NLP, SIP.

OVP、UVP、OPP、OTP、SCP、NLP、SIP全维度安全防护



Black/White

650W/750W/850W/1050W

# Nexus Gold Ultra



- Soft black-purple braided cables with easy cable management, made of pure tinned copper.

更易理线的黑紫配色柔软压纹线, 纯铜镀锡材质

- 80 PLUS Gold Certification + China CQC Class III Energy Efficiency Dual Certification.

80 PLUS金牌认证+中国CQC III级能效双认证

- Native PCIe 5.1 12V-2x6 GPU power connector.

原生 PCIe 5.1 12V-2x6 显卡供电接口

- Compliant with ATX 3.1 standard, supporting 300% instantaneous dynamic load.

兼容 ATX3.1 标准, 支持300% 瞬时动态负载

- Top-tier Japanese primary & secondary capacitors + DC-DC + APFC + LLC platinum-level topology.

日本一线主/副电容+DC-DC+APFC+LLC 白金同级架构

- Equipped with Golden Field self-developed Xuanji Chip and NexusCool 3D+ high-efficiency heat dissipation technology.

搭载金河田自研璇玑芯片、NexusCool 3D+高效散热技术

- FDB bearing fan with one-key start/stop intelligent ECO mode.

FDB轴承风扇、搭配一键启停智能ECO

- Passed global safety and environmental certifications including CE, FCC and RoHS.

通过 CE、FCC、RoHS 等全球多项安全环保认证

- Full-dimensional safety protections: OVP, UVP, OPP, OTP, SCP, NLP, SIP.

OVP、UVP、OPP、OTP、SCP、NLP、SIP全维度安全防护



750W/850W/1050W

# Nexus Gold SE



- 80 PLUS Gold Certification + China CQC Class III Energy Efficiency Dual Certification.

80 PLUS金牌认证+中国CQC III级能效双认证

- Native PCIe 5.1 12V-2x6 GPU power connector.

原生 PCIe 5.1 12V-2x6 显卡供电接口

- Compliant with ATX 3.1 standard, supporting 200% instantaneous dynamic load.

兼容 ATX3.1 标准, 支持 200% 瞬时动态负载

- High-quality Taiwanese capacitors + DC-DC + APFC + LLC platinum-level topology.

台湾主电容+DC-DC+APFC+LLC 白金同级架构

- Equipped with Golden Field self-developed Xuanji Chip and NexusCool 3D+ high-efficiency heat dissipation technology.

搭载金河田自主研发璇玑芯片、NexusCool 3D+高效散热技术

- Passed global safety and environmental certifications including CE, FCC and RoHS.

通过 CE、FCC、RoHS 等全球多项安全环保认证

- Full-dimensional safety protections: OVP, UVP, OPP, OTP, SCP, NLP, SIP.

OVP、UVP、OPP、OTP、SCP、NLP、SIP全维度安全防护



Black/White

750W/850W/1050W

# Nova Bronze Ultra



- 80 PLUS Bronze Certification + China CQC Class II Energy Efficiency Dual Certification.

80 PLUS铜牌认证+中国CQC II级能效双认证

- Native PCIe 5.1 12V-2x6 GPU power connector.

原生 PCIe 5.1 12V-2x6 显卡供电接口

- Compliant with ATX 3.1 standard, supporting 200% instantaneous dynamic load.

兼容 ATX3.1 标准, 支持 200% 瞬时动态负载

- Active PFC + Dual-switch forward topology + Synchronous rectification + Independent DC-DC architecture.

主动式 PFC + 双管正激 + 同步整流 + 独立 DC-DC 架构

- Load-controlled ECO mode, with intelligent fan stop at 50% load.

载控 ECO 模式, 50% 负载下风扇智能停转

- 100-240V universal wide voltage input, stable operation under harsh environments conditions.

100-240V 全球宽幅电网适配, 恶劣环境持续稳定

- Passed global safety and environmental certifications including CE, FCC and RoHS.

通过 CE、FCC、RoHS 等全球多项安全环保认证

- Full-comprehensive safety protections: RVUS, UVP, OVP, OPP, SCP, OCP, OTP.

RVUS、UVP、OVP、OPP、SCP、OCP、OTP 全维度安全防护

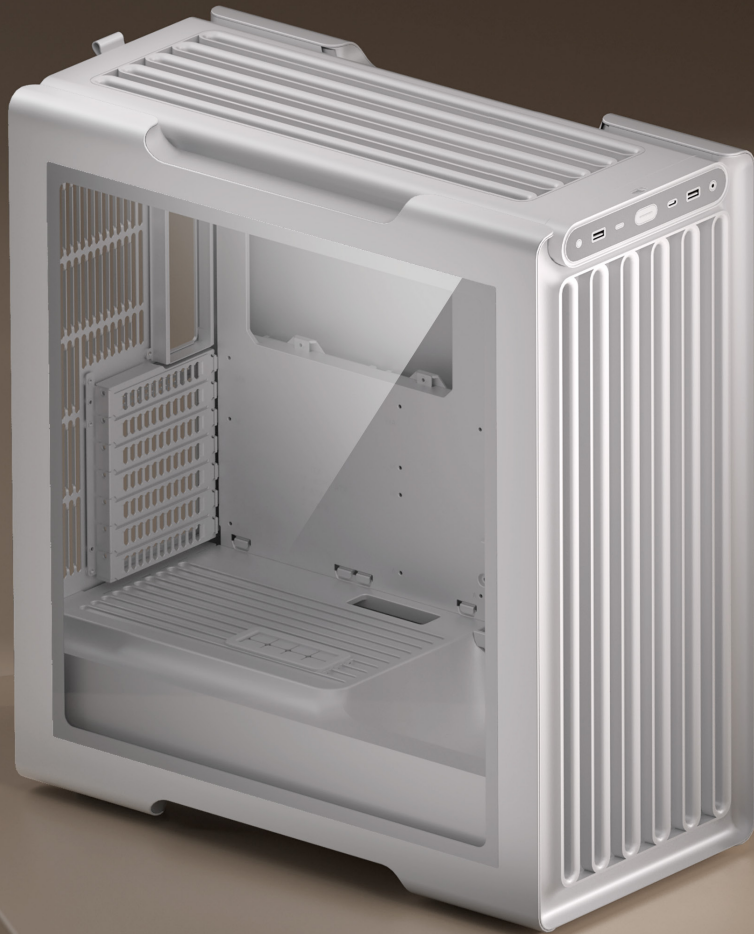


Black/White

650W/750W/850W

# Designer 14

Black/White



- Fabric-wrapped I/O panel and top handle design, delivering a high-quality home living aesthetic for performance-focused chassis.

编制布艺I/O面板与顶板提手, 性能主机融入家居生活质感

- Adopting a minimalist black-and-white dual-tone color scheme and 0.8mm high-quality SPCC steel plate, featuring pressure resistance and anti-deformation properties.

黑白双色极简配色、0.8mm SPCC 优质板材, 抗压防变形

- Full-size motherboard support: ATX / M-ATX / ITX.

ATX/M-ATX/ITX 全尺寸主板支持

- Maximum graphics card length: 390mm (vertical graphics card mounting supported).

显卡限长 390mm (支持显卡竖装方案)

- Maximum CPU cooler height: 185mm, compatible with high-tower air coolers.

CPU 散热器限高 185mm, 可容纳高塔风冷

- Front/top mount compatible with 360mm liquid coolers, rear mount supports 140mm liquid coolers.

前置 / 上置适配 360 水冷, 后置兼容 140 水冷

- Compatible with power supplies up to 262mm in length.

电源支持 262mm 长尺寸

- Diversified storage expansion options: dual HDD + dual SSD configurations.

双 SSD + 双 HDD 多方案存储拓展

- Equipped with 7 PCIe expansion slots, allowing installation of multiple graphics cards and expansion cards.

7 个 PCIe 扩展槽, 支持多显卡、拓展卡加装

- Chassis dimensions: 471.4×240×520.4mm. The large-capacity internal chamber enables easy cable management and component installation.

机身尺寸 471.4×240×520.4mm, 大容积舱体, 轻松走线安装

- Multi-area fan mounting positions on the front, top and rear, supporting the construction of a three-dimensional circulating air duct.

前置 + 顶部 + 后置多区域风扇位, 可搭建立体循环风道

# Wind Chaser

逐风

Black/White



- 300,000 mm<sup>2</sup> ultra-large heat dissipation area with a five-sided modular design, supporting water washing for easy cleaning.

30万 mm<sup>2</sup>超大散热面积, 五面模块化设计, 支持水洗清洁

- Front inclined wind-guiding air intake structure delivers directional airflow to enhance graphics card cooling efficiency.

前部斜坡导流进风结构, 定向送风, 强化显卡散热效率

- A total of 11 fan mounting positions with air duct layouts on the front, rear, top and bottom, fully unlocking heat dissipation potential.

前后+上下共11处风扇位风道布局, 释放散热潜力

- Comes standard with a 10Gbps Type-C port and dual USB 3.0 (5Gbps) high-speed interfaces.

标配 10Gbps Type-C + 双 USB 3.0 (5Gbps) 高速接口

- 35mm widened cable management compartment on the rear with 10 reserved cable routing holes for easier wiring and installation.

背部 35mm 加宽理线仓, 预留 10 组理线孔, 更易走线安装

- Diversified storage expansion options: dual SSD + single HDD, triple SSD, or dual HDD configurations.

双 SSD + 单 HDD / 三 SSD / 双 HDD 多方案存储拓展

- Full hardware compatibility: supports standard and back-plug matx/itx motherboards, maximum air cooler height: 180mm.

适配 MATX/ITX 常规 & 背插主板、风冷散热器限高 180mm

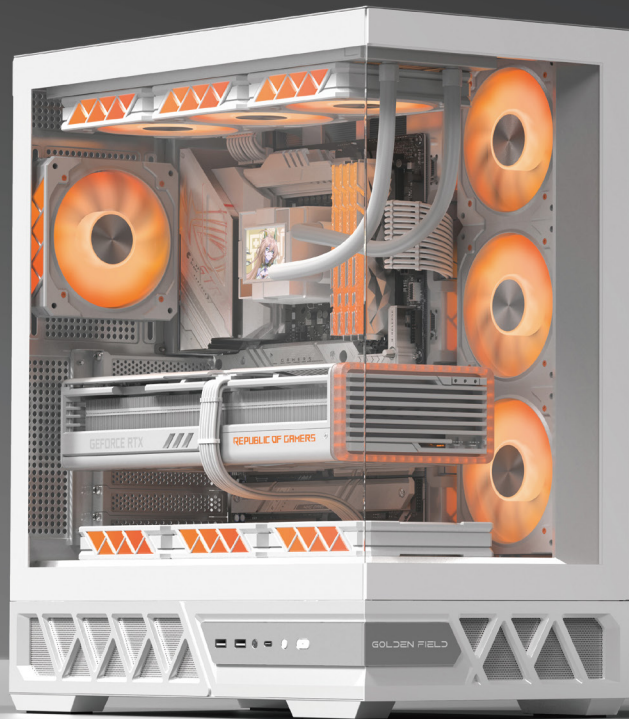
- Compatible with graphics cards up to 410mm in length, equipped with 5 reusable graphics card slots for flexible modification and upgrades.

长显卡兼容至 410mm、配备 5 组可复用显卡槽位, 改装升级灵活

# Parallel World

## 平行世界

Black/White



- 270° panoramic pillarless viewing experience with seamlessly spliced beveled tempered glass for an immersive transparent ambiance.

270° 全景无立柱视效, 斜切钢化玻璃无缝拼接, 通透氛围感

- Boasting an ultra-large heat dissipation area of 138362 mm<sup>2</sup> and a modular structural design for easy disassembly, installation and maintenance.

超大138362mm<sup>2</sup>散热面积, 模块化结构设计, 便捷拆装维护

- Equipped with a total of 10 fan mounting positions on the front, rear, top and bottom to fully unlock heat dissipation potential.

前后+上下共10处风扇位布局, 释放散热潜力

- Compatible with ATX / M-ATX / ITX and rear-insert motherboards, supporting graphics cards with a maximum length of 430mm.

兼容ATX / M-ATX / ITX / 背插主板, 显卡最长支持 430mm

- Dual premium cooling solutions for water cooling and air cooling: dual 360mm water cooling mounting slots, and a 172mm height limit for air coolers.

水冷风冷双顶配: 双 360 水冷安装位, 风冷限高 172mm

- Removable PCI-E baffles enable vertical GPU installation with ease, alongside a 35mm widened cable management compartment at the rear.

可拆卸 PCI-E 挡板, 轻松实现显卡竖装, 背部 35mm 加宽理线仓

- Diversified storage expansion options: dual HDD + triple SSD configurations.

双 HDD + 三 SSD 多方案存储拓展

- Integrated all-in-one IO jumper design, equipped with Type-C (10Gbps) & dual USB 3.0 ports (5Gbps).

一体式 IO 集成跳线, TYPE-C(10Gbps)&USB3.0\*2 (5Gbps)

# Parallel World M

Screen display version

## 平行世界 M(屏显)

Black/White



- 431.6×242×447.7mm, compact for desktop placement.  
机身尺寸 431.6×242×447.7 毫米, 桌面摆放小巧省空间
- SPCC steel + tempered glass construction, sturdy and durable.  
采用 SPCC 冷轧钢板 + 钢化玻璃打造, 结构坚固、经久耐用
- 270° pillar-free panoramic side transparent design, equipped with 6-inch LCD smart display, supports DIY personalized display setting.  
270° 无立柱全景侧透设计, 搭载6英寸LCD智能显示屏, 支持DIY个性化定义显示
- Large mesh ventilation, paired with a "front-intake, rear-exhaust, bottom-intake, top-exhaust" airflow channel for efficient heat dissipation.  
大面积网孔通风结构, 搭配前进风、后出风、底进风、顶出风风道, 散热效率强劲
- Supports M-ATX / ITX and back-plug motherboards, with 5 PCIe expansion slots.  
兼容 M-ATX / ITX 及背插式主板, 配备 5 个 PCIe 拓展插槽
- Accommodates GPUs up to 410mm in length and CPU air coolers up to 180mm in height.  
最长支持 410mm 独立显卡, CPU 风冷散热器限高 180mm
- Front I/O Ports: 2 × USB 3.0, 1 × High-speed Type-C (10Gbps), 1 × Combo HD Audio Jack (Microphone/Headphone shared)  
前置接口: USB 3.0 × 2、高速 Type-C × 1(10Gbps)、二合一高清音频口 × 1 个 (麦克风 / 耳机共用)
- Diversified storage expansion options: dual HDD or triple SSD configurations.  
双 HDD 或 三 SSD 多方案存储拓展
- Supports multi-size water cooling: top 360/280/240mm, motherboard 240mm, rear 120mm.  
多规格水冷适配: 顶部支持 360/280/240mm 冷排、主板位 240mm 冷排、尾部 120mm 冷排
- Supports up to 8 case fans, with a magnetic dust filter at the bottom.  
最高可安装 8 把机箱风扇, 底部标配磁吸式防尘网

# Parallel World M

## 平行世界 M

Black/White



- 431.6×242×447.7mm, compact for desktop.

尺寸 431.6×242×447.7 毫米, 桌面摆放小巧紧凑

- SPCC steel + tempered glass, sturdy structure.

采用 SPCC 冷轧钢板 + 钢化玻璃材质, 结构坚固耐用

- 270° pillarless sea-view design, large mesh ventilation.

270° 无立柱海景侧透设计, 大面积网孔通风

- Supports M-ATX/ITX & back-plug motherboards, 5 PCIe slots.

支持 M-ATX/ITX 主板及背插式主板, 配备 5 条 PCIe 插槽

- Up to 410mm GPU, 180mm CPU air cooler.

显卡最长支持 410 毫米, CPU 风冷散热器限高 180 毫米

- Front I/O Ports: 2 × USB 3.0, 1 × High-speed Type-C (10Gbps), 1 × Combo HD Audio Jack (Microphone/Headphone shared)

前置接口: USB 3.0 × 2、高速 Type-C × 1(10Gbps)、二合一高清音频口 × 1 个 (麦克风 / 耳机共用)

- Diversified storage expansion options: dual HDD or triple SSD configurations.

双 HDD 或 三 SSD 多方案存储拓展

- Supports water cooling: top 360/280/240mm, board 240mm, rear 120mm.

水冷支持: 顶部兼容 360/280/240 毫米水冷排、侧板 240 毫米水冷排、尾部 120 毫米水冷排

- Supports up to 8 case fans, bottom magnetic dust filter.

最高可加装 8 把机箱风扇, 底部配备磁吸防尘网

# CRPS Power Supply Series

CRPS 系列电源产品

**Golden Field CRPS power supplies fall into three categories: CRPS 800~3300 (Ti) Titanium Series, CRPS 800-3300W (Pt) Platinum/Titanium Series, and MCRPS 2700~4000 (Ti) Titanium Series. All comply with Intel's CRPS redundant power supply specifications, featuring high power, high density and high efficiency.**

金河田 CRPS 系列电源分为 CRPS 800~3300 (Ti) 钛金系列、CRPS 800-3300W (Pt) 白金 / 钛金系列、MCRPS 2700~4000 (Ti) 钛金系列三大类，均遵循英特尔 CRPS 冗余电源定义指标，具备高功率、高密度、高效率特性



- All-digital circuit design, compliant with Intel CRPS redundant power supply specifications.  
全数字电路设计，遵循英特尔 CRPS 冗余电源定义指标

- Supports N+1 and other redundant modes; when a single power supply fails, other modules take over immediately to avoid system interruption.

支持 N+1 等多种冗余模式，单个电源故障时其他模块即时接管，避免系统中断

- Automatically identifies AC/DC power requirements of servers and dynamically allocates power supply modules. Integrated monitoring enables real-time tracking of power status, temperature, and early warning.

自动识别服务器交 / 直流用电需求，动态分配电源模块；集成监控功能，实时监测电源状态、温度并预警

- Supports hot-swapping and PMBus 1.2 communication protocol for improved operation and maintenance efficiency. Features EEPROM for storing FRU data, black-box recording, and other functions.

支持热插拔，PMBus1.2 通信协议，提升运维效率；具备 EEPROM 储存 FRU 数据、黑盒记录等功能

- Certified with CB, CE, CCC, CQC, FCC and other safety approvals, meeting high-standard Class A electromagnetic compatibility (EMC).

通过 CB/CE/CCC/CQC/FCC 等多种安规认证，达到高标准安全电磁兼容 (Class A)

- Widely used in general servers, edge computing servers, AGPU large-model servers, data centers, communications and telecommunications equipment and industries.

广泛适用于通用服务器、边缘计算服务器、AGPU 大模型服务器、数据中心、通信和电信等设备 / 行业

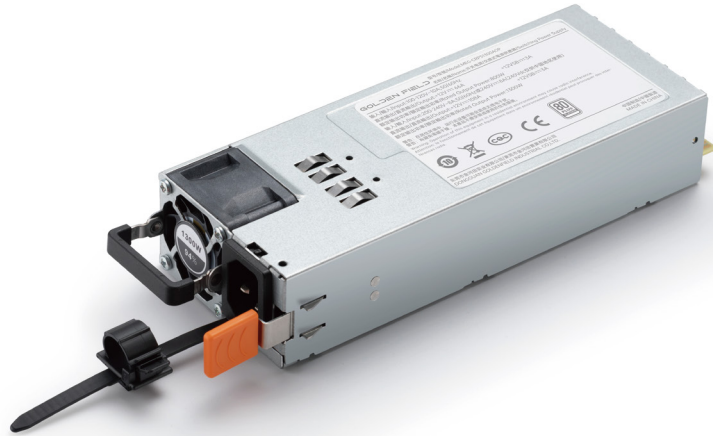


# CRPS 800~3300W (Ti) Titanium Series

**Power range: 800W~3300W | Efficiency: 80PLUS Titanium | Communication: PMBus 1.2 | Input voltage: 90~264VAC/180~320VDC | Operating Temperature: -5°C to +55°C | Safety certifications: FCC, CE, CB, CCC, CQC.**

功率段: 800W-3300W | 能效等级: 80PLUS 钛金 | 通信协议: PMBus 1.2 | 适配电压: 90~264VAC/180~320 VDC | 工作温域: -5°C~+55°C | 安规认证: FCC、CE、CB、CCC、CQC

- All-digital circuit design, Intel-standard CRPS dimensions (185×73.5×40mm), perfectly fits standard server chassis with excellent installation compatibility.  
全数字电路设计, 英特尔标准 CRPS 尺寸 (185×73.5×40mm), 完美适配标准服务器机箱, 装机兼容性拉满
- Top-level 80PLUS Titanium efficiency delivers exceptional energy efficiency ratio, greatly reducing long-term power costs for data centers.  
顶配 80PLUS 钛金能效, 极致能耗比, 大幅降低数据中心长期用电成本
- Supports 1+1/2+1/3+1/N+N multi-mode redundancy with EDPP function; other modules take over instantly upon single power supply failure, ensuring zero system downtime risk.  
支持 1+1/2+1/3+1/N+N 多模式冗余, 搭配 EDPP 功能, 单电源故障时其他模块即时接管, 零系统中断风险
- Adaptable up to 5000m altitude, with high surge protection of CM±2.6kV/DM±1.3kV, enabling stable operation even in harsh environments.  
宽海拔 5000m 适配, CM±2.6KV/DM±1.3KV 高浪涌防护, 恶劣环境下仍能稳定运行
- Comprehensive UVP/OVP/OC/SCP/OTP full-range protection combined with Class A electromagnetic compatibility safeguards equipment safety inside and out.  
完善的 UVP/OVP/OC/SCP/OTP 全维度保护, 搭配 Class A 级电磁兼容, 从内到外保障设备安全
- Hot-swappable design allows module replacement and maintenance without shutdown, significantly improving computer room operation and maintenance efficiency.  
支持热插拔设计, 无需停机即可完成模块更换 / 维护, 大幅提升机房运维效率
- Rear fan air intake cooling matches perfectly with equipment air ducts, effectively reducing internal temperature rise in the chassis.  
风扇后向进风散热, 散热效率与设备风道完美匹配, 有效降低机箱内部温升



# CRPS 800-3300W (Pt) Platinum / Titanium Series

**Power Range: 800W-3300W | Efficiency: 80PLUS Platinum / Titanium Dual Versions |**

**Protocol: PMBus 1.2 | Input Voltage: 90~264VAC / 180~320VDC | Operating Temperature:**

**-5°C~+55°C | Certifications: FCC, CE, CB, CCC, CQC**

功率段:800W-3300W | 能效等级:80PLUS 白金 / 钛金双版本 | 通信协议:PMBus1.2|适配电压:90~264VAC/180~320 VDC

| 工作温域:-5°C~+55°C | 安规认证:FCC、CE、CB、CCC、CQC

- Featuring Intel-standard CRPS dimensions (185×73.5×40mm) and all-digital circuit design, it seamlessly integrates with mainstream servers for easy installation with no compatibility costs.

英特尔标准 CRPS 尺寸 (185×73.5×40mm), 全数字电路设计, 与主流服务器无缝适配, 安装便捷无适配成本

- Designed with dual efficiency ratings in the same form factor, modules can be directly replaced during computing cluster upgrades or expansion without modifying the chassis or power architecture.

双能效版本同规设计, 算力场景升级 / 扩容时, 可直接替换模块, 无需改造机箱与供电架构

- Tiered redundancy design: basic models support 1+1/2+1/3+1/2+2, while high-end models support 1+1/2+1/3+1/N+N to suit computing clusters of various scales.

分阶冗余设计, 基础款支持 1+1/2+1/3+1/2+2, 高阶款升级 1+1/2+1/3+1/N+N, 适配不同规模算力集群

- With 450V (10ms) high surge immunity and 5000m wide-altitude adaptability, it provides stable power supply even in complex grids and remote edge data centers.

450V (10ms) 高浪涌耐受, 5000m 宽海拔适配, 复杂电网、偏远地区边缘机房均能稳定供电

- Comprehensive UVP/OVP/OCP/SCP/OTP protection plus Class A EMC performance prevents equipment failures caused by voltage anomalies, short circuits, overheating, and other issues.

UVP/OVP/OCP/SCP/OTP 全保护机制 + Class A 电磁兼容, 杜绝因电压异常、短路、过热等导致的设备故障

- Hot-swappable design enables maintenance without shutdown. Paired with PMBus 1.2 intelligent communication, it monitors power status in real time, provides early warnings of potential risks, and reduces labor costs for operation and maintenance.

热插拔免停机维护, 搭配 PMBus1.2 智能通信, 实时监测电源状态, 潜在问题提前预警, 降低运维人力成本

- Rear intake fan cooling works in harmony with server airflow to improve overall heat dissipation and lower failure rates of core components.

后向进风风扇散热, 与服务器风道协同, 提升整机散热效果, 减少核心组件故障率



# MCRPS 2700~4000 (Ti)

## High-Power Titanium Series

**Power Range: 2700W-4000W | Efficiency Level: 80PLUS Titanium | Communication Protocol: PMBus 1.2 | Input Voltage: 90~305VAC / 180~320VDC (4000W version) | Operating Temperature: -5°C~+55°C | Safety Certifications: FCC, CE, CB, CCC, CQC**

功率段:2700W-4000W | 能效等级:80PLUS 纯钛金 | 通信协议:PMBus1.2 | 适配电压:90~305VAC/180~320 VDC (4000W 款) | 工作温域:-5°C~+55°C | 安规认证:FCC、CE、CB、CCC、CQC

- Specially designed for the high-power range of 2700W-4000W, perfectly suited for high-power core equipment such as AGPU large-model servers and high-density computing clusters.

2700W-4000W 超大功率段专属设计,完美适配 AGPU 大模型服务器、高密度算力集群等高功耗核心设备

- Equipped with top-tier 80PLUS Titanium efficiency, delivering exceptional energy saving even at high power output, significantly reducing long-term operating costs in high-computing scenarios.

顶配 80PLUS 钛金能效,高功率下仍保持极致节能,大幅降低高算力场景的长期运营成本

- Dual output options (12V/12VSB, 54V/12VSB) to meet the power supply demands of various high-performance computing devices, maximizing product scalability.

双电压输出可选 (12V/12VSB、54V/12VSB), 适配多类型高算力设备供电需求,产品拓展性拉满

- High-precision voltage regulation ( $\pm 3\%$ ) with ripple noise as low as 120mVpk-pk, providing clean and stable power input for precision computing components.

高精度稳压 ( $\pm 3\%$ ), 纹波噪音低至 120mVpk-pk, 为精密算力组件提供纯净、稳定的电力输入

- Compatible with Intel-standard CRPS dimensions (185×73.5×40mm); the 4000W model only extends depth (265×73.5×40mm) with no major chassis modifications required.

英特尔标准 CRPS 尺寸兼容 (185×73.5×40mm), 4000W 款仅加长深度 (265×73.5×40mm), 无需大幅改造机箱

- Supports full-mode redundancy including 1+1/2+1/3+1/N+N, combined with EDPP and hot-swappable design, enabling zero-downtime maintenance in high-computing environments and ensuring uninterrupted core services.

支持 1+1/2+1/3+1/N+N 全模式冗余, 搭配 EDPP 功能 + 热插拔设计, 高算力场景下零停机维护, 保障核心业务连续运行

- High-standard surge protection (CM $\pm$ 2.5kV/DM $\pm$ 1.5kV/CM $\pm$ 4kV/DM 2kV) and dual-altitude compatibility at 3150m/5000m, ensuring excellent adaptability in complex industrial and computing scenarios.

高规格浪涌防护 (CM $\pm$ 2.5kV/DM $\pm$ 1.5kV/CM $\pm$ 4kV/DM 2kV), 3150m/5000m 双海拔适配, 复杂工业、算力场景适配性拉满

- Comprehensive UVP/OVP/OCP/SCP/OTP protections plus Class A electromagnetic compatibility, providing all-round safety for high-value computing equipment.

UVP/OVP/OCP/SCP/OTP 全保护 + Class A 电磁兼容, 为高价值算力设备提供全方位安全保障